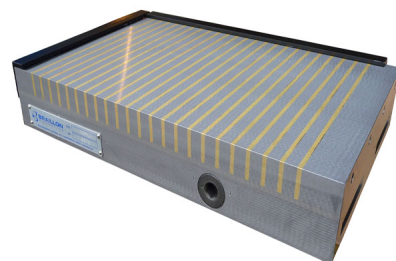


10.03 PERMANENT MAGNETIC CHUCK FOR MILLING TYPE TF2



High holding power, Heavy duty construction, Waterproof construction, Twin magnetic system

Applications

Milling , Drilling , Contouring , Machining , Planning

Construction

. Twin magnetic system (magnets inserted into the body and into the top plate) .

Magnetic system with Neodymium magnets . Brass separations between the magnetic poles Included with purchase: - 1 Actuating key - Long and short side end stops - Clamps

Pole pitch 15 mm

Nominal force 150 N/cm²

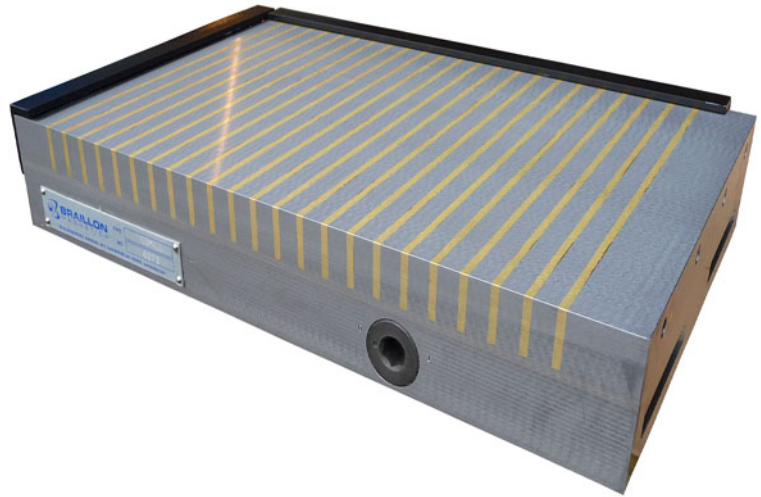
Admissible wear of top plate 6 mm

Magnetic field height 10 mm

Art.-N° 10.03		Diagram below: dimensions in mm			
Product	Weight	A	B	C	
10.03.250150	17,0	250	150	55	
10.03.300150	20,0	300	150	55	
10.03.350150	23,5	350	150	55	
10.03.450150	32,0	450	150	55	
10.03.300200	30,0	300	200	60	
10.03.400200	39,0	400	200	60	
10.03.450200	43,0	450	200	60	
10.03.500200	48,0	500	200	60	
10.03.600200	58,0	600	200	60	
10.03.400250	48,5	400	250	65	
10.03.500250	60,0	500	250	65	
10.03.300300	44,0	300	300	60	
10.03.400300	58,0	400	300	60	
10.03.500300	72,0	500	300	65	
10.03.600300	87,0	600	300	65	

OPTIONS :

- Sine table execution
- Fitted to an angle iron for tombstone application
- Part of palletizing system:
Erowa, 3R, Hirschmann,
Vischer & Boli



All right reserved to change construction and dimensions without notice - Print date :

Bridage, Magnétisme & Systèmes Sarl - 120 rue Jean Jaurès - F 92300 Levallois Perret
Tél. 33 (0)1 80 87 61 69 - Fax 33 (0)1 80 87 61 70 - info@bms-industrie.com - www.bms-industrie.com