

11.01 Circular Permanent Magnetic Chuck Type ERCA

High holding power, Recommended for hard turning

Applications

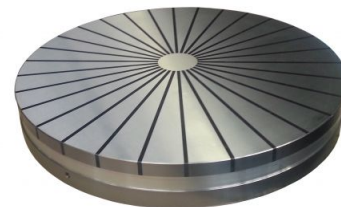
Grinding , Turning , Hard turning

Construction

. Radial pole pitch with steel + epoxy resin . AlNiCo magnets allow for applications at high temperatures . Adjustable holding force for positioning of workpieces Included with purchase: - 1 Actuating Key

Nominal force 110 N/cm²

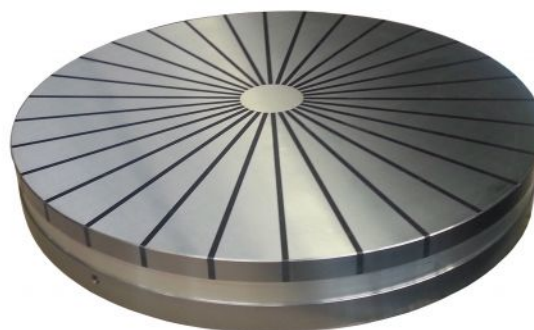
Admissible wear of top plate 5 mm



| Art.-N°11.01 | | Diagram below: dimensions in mm | | | | | | | | | |
|--------------|--------|---------------------------------|----|----|-----|-----|-----|------|---|----|----|
| Product | Weight | A | B | C | D | E | F | G | H | I | J |
| 11.01.150 | 8 | 150 | 54 | 17 | 50 | 80 | 120 | 4xM6 | 5 | 24 | 10 |
| 11.01.200 | 15 | 200 | 58 | 17 | 60 | 110 | 180 | 4xM6 | 5 | 30 | 14 |
| 11.01.250 | 25 | 250 | 58 | 17 | 80 | 140 | 220 | 4xM6 | 5 | 50 | 14 |
| 11.01.300 | 37 | 300 | 58 | 22 | 150 | 180 | 260 | 4xM8 | 6 | 58 | 18 |
| 11.01.350 | 53 | 350 | 71 | 22 | 170 | 220 | 300 | 4xM8 | 6 | 58 | 18 |
| 11.01.400 | 69 | 400 | 71 | 22 | 200 | 260 | 340 | 4xM8 | 8 | 58 | 18 |
| 11.01.500 | 108 | 500 | 71 | 22 | 200 | 350 | 450 | 4xM8 | 8 | 75 | 24 |
| 11.01.600 | 172,0 | 600 | 80 | 22 | 250 | 350 | 450 | 4xM8 | 8 | 90 | 30 |

OPTIONS :

- T-slots in each pole
- Through hole in the middle
- Raising pole shoes
- Auxiliary top plate
- Fitting adaptors to:
 - . Morse cone 3 or 4
 - . Short taper flanges for:
 - A2 DIN 55026
 - Bayonet DIN 55027
 - Camlock DIN 55029



All right reserved to change construction and dimensions without notice - Print date :