

## 11.05 Circular Permanent Magnetic Chuck type MPF2

Heavy duty construction, Waterproof construction, Low magnetic field

### Applications

Grinding , EDM , metrology , Laser welding

### Construction

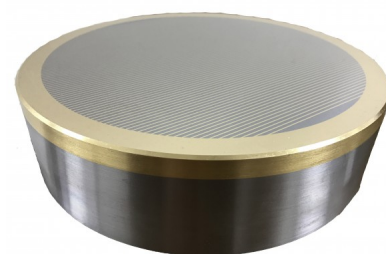
. Circular magnetic chuck with NEODYMIUM magnets . Low magnetic field .  
Fine pole pitch . Suitable for precision machings and thin workpieces Included  
with purchase: - 1 Actuating Key

Pole pitch 2 mm

Nominal force 95 N/cm<sup>2</sup>

Admissible wear of top plate 5 mm

Magnetic field height 4 mm



Art.-N°11.05		Diagram below: dimensions in mm					
Product	Weight	A	B	C	D	E	F
11.05.100G	3	100	52	85	60	4	4xM6
11.05.130G	5	130	52	115	90	4	4xM8
11.05.150G	7	150	52	132	110	4	4xM8
11.05.200G	12	200	52	180	160	5	4xM8
11.05.250G	19	250	52	230	200	5	4xM10
11.05.300G	28	300	52	280	230	5	4xM10

### OPTIONS :

Machining possible at the rear of the chuck

Fitting adaptors to:

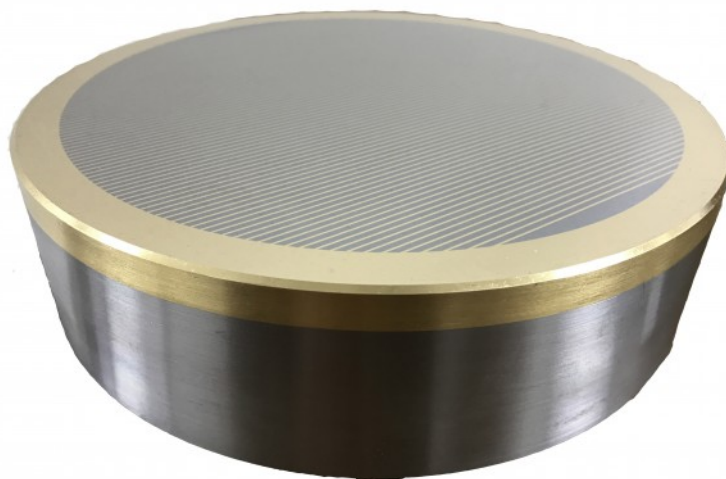
. Morse cone 3 or 4

. Short taper flanges for:

A2 DIN 55026

Bayonet DIN 55027

Camlock DIN 55029



All right reserved to change construction and dimensions without notice - Print date :